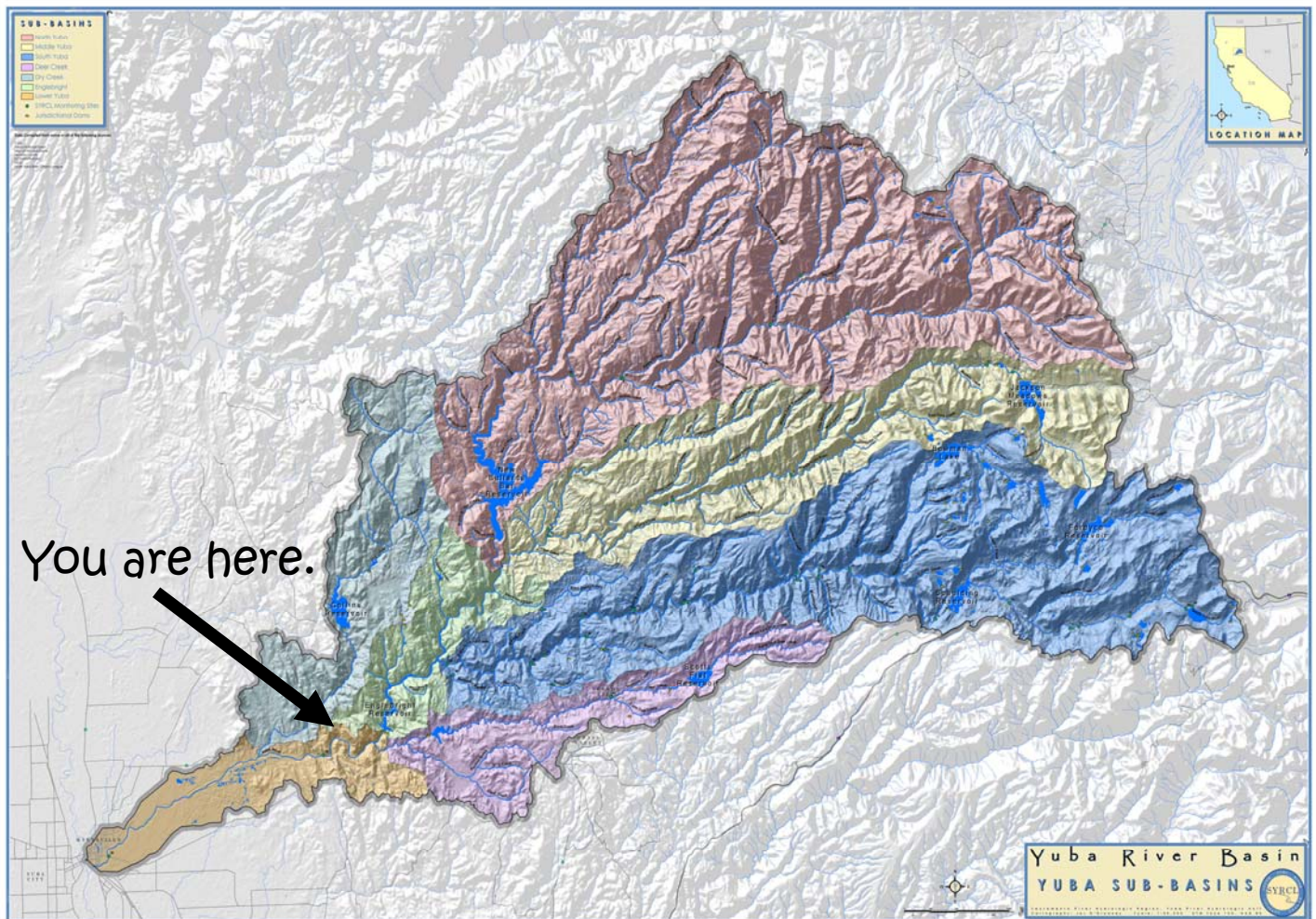


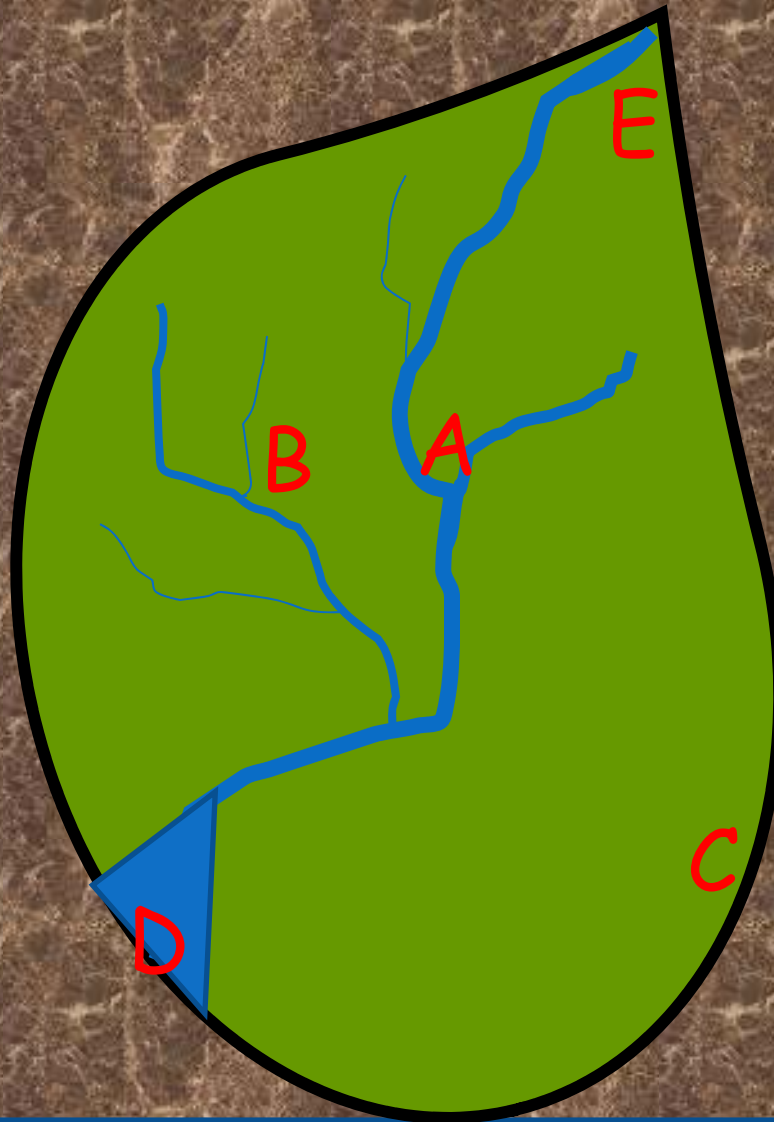
Yuba River Watershed

Watershed - It's the area of land that catches rain and snow and drains or seeps into a marsh, stream, river, lake or groundwater.

On the map below, there are three watersheds (basins) of the Yuba River. Can you find them?



The Main Features of a River Basin



Key:

A - Confluence, where one river joins another river.

B - Tributary, where smaller rivers flow into larger rivers.

C - Watershed, an area of land that drains into a lake or river.

D - Mouth, where a river meets the ocean or sea.

E - Source, where the river begins.